

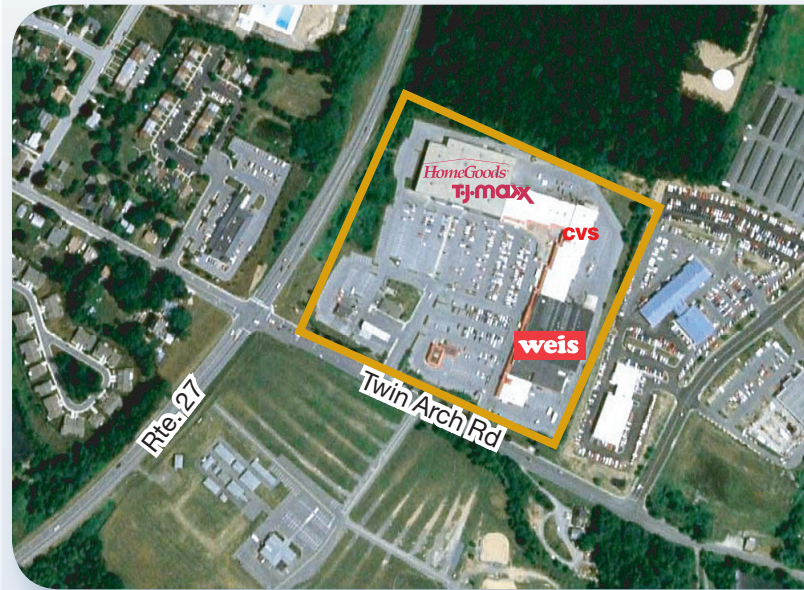
# TWIN ARCH SHOPPING CENTER

1001 TWIN ARCH ROAD, MT. AIRY, MARYLAND 21771

**RETAIL/COMMERCIAL CENTER  
SERVING MT. AIRY, DAMASCUS & FREDERICK**

## SPACE AVAILABLE IN POPULAR CENTER!

- Inline retail/office space available now.
- Destination center anchored by Weis Supermarket, Home Goods & TJ Maxx.
- Serves growing bedroom communities of Frederick, Baltimore and Washington, DC.
- 22,000+ cars pass center each day at Rte. 27 & Twin Arch Rd.



## CENTER FACTS

### TYPE

Community Shopping Center

### LOCATION

Twin Arch Road & Ridge Road in Mt. Airy/Carroll County, MD

**SIZE** 170,000 square feet

**PARKING SPACES** 926

**SERVING** Frederick, Baltimore and Washington, DC

**ACCESS** Easy access from I-70 and Rte. 27 to Ridge Road & Twin Arch Road

DEMOGRAPHICS	1 MILE	3 MILES	5 MILES
Population	4,498	17,554	31,956
Households	1,779	6,121	11,008
Average HH Income	\$112,700	\$141,181	\$150,365

SMART IDEAS. SENSIBLE SOLUTIONS.



**COMPASS REAL ESTATE**  
COMMERCIAL SALES & LEASING

**PATTI REYNOLDS**

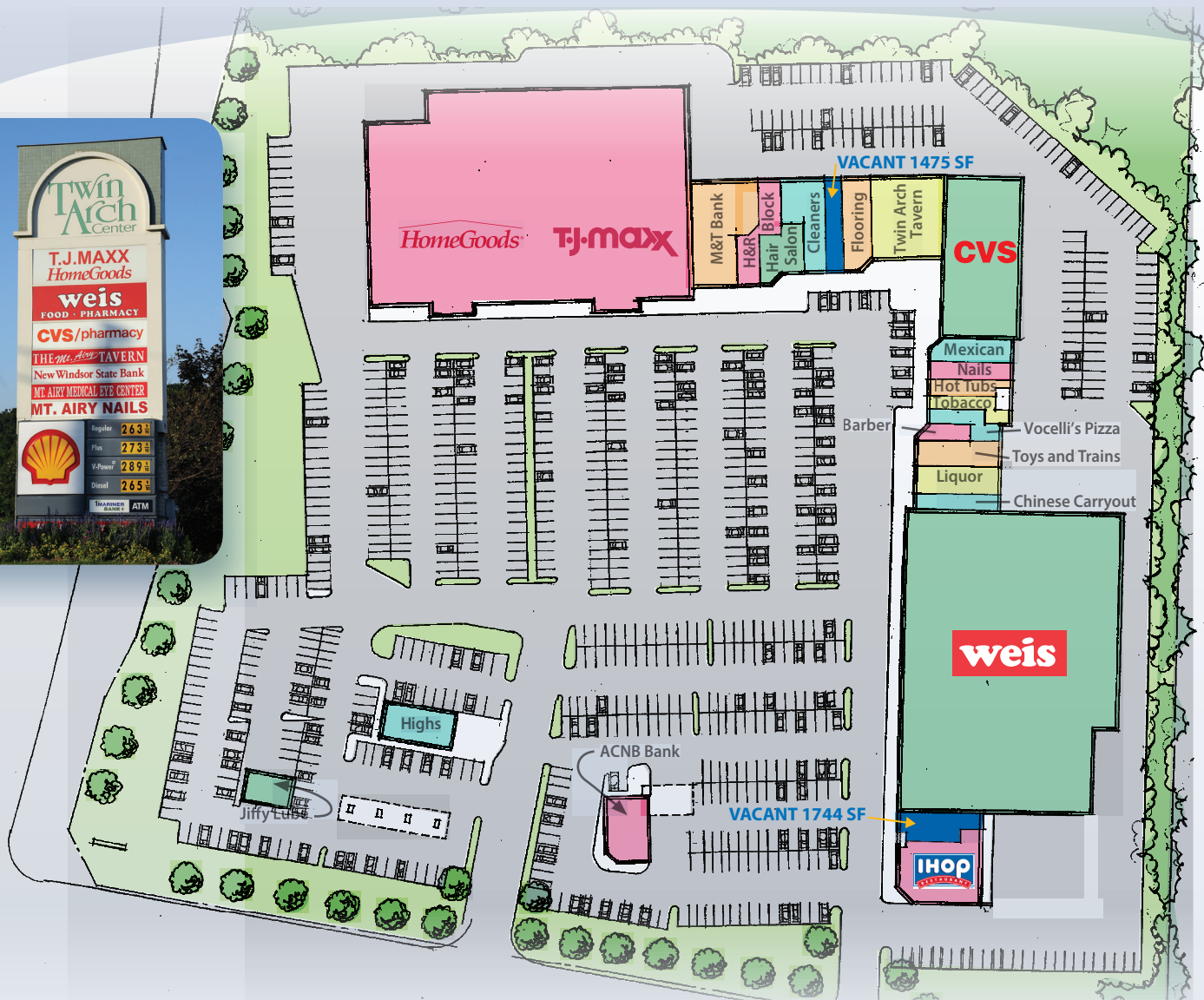
cell 443.838.8925

preynolds@cre360.com

www.cre360.com

# TWIN ARCH SHOPPING CENTER

1001 TWIN ARCH ROAD, MT. AIRY, MARYLAND 21771



Twin Arch Shopping Center is a popular, grocery-anchored shopping center offering a combination of services and restaurants serving the growing bedroom communities of Frederick, Baltimore and Washington, DC. Accessible from I-70 and Route 27 in Mount Airy, Maryland, this vibrant area is home to a growing base of destination and convenience shoppers drawing from a large region in Carroll, Howard and Frederick counties. The center enjoys a wide mix of traditional tenants including Weis Supermarket, Home Goods, T.J. Maxx, restaurants and various retail goods and services. Join the newly-expanding tenant community at Twin Arch Shopping Center today!



SMART IDEAS. SENSIBLE SOLUTIONS.



**COMPASS REAL ESTATE**  
COMMERCIAL SALES & LEASING

PATTI REYNOLDS cell 443.838.8925 | preynolds@cre360.com | www.cre360.com

8480 Baltimore National Pike, Suite 415, Ellicott City, Maryland, 21043



While we have no reason to doubt the accuracy of any of the information supplied, we cannot, and do not, guarantee its accuracy. All information should be independently verified prior to a purchase or lease of the property. We are not responsible for errors, omissions, misuse, or misinterpretation of information contained herein & make no warranty of any kind, express or implied, with respect to the property or any other matters.